

WELCOME TO FAIRMONT'S CANADIAN WESTERN MOUNTAIN REGION



FAIRMONT BANFF SPRINGS

Located in Canada's first National Park, Fairmont Banff Springs is surrounded by pristine Canadian wilderness and offers unmatched adventure in every season of the year. The three iconic ski resorts (Norquay, Sunshine Village & Lake Louise Ski Resort) within an hour drive will keep you busy exploring all winter long. During the summer months, discover some of the best hiking in Canada with the thousands of kilometers of trails throughout Banff National Park.



FAIRMONT CHATEAU LAKE LOUISE

Nestled on the shores of Lake Louise, Fairmont Chateau Lake Louise is an iconic Canadian hotel located in the heart of Banff National Park. Lake Louise is an adventure lovers dream. In winters, colleagues spend their days snowshoeing, ice skating and skiing at the award winning Lake Louise Ski Resort (famous for it's "Champagne Powder"). Summers are filled with hiking, camping, biking and of course, canoeing on the Lake.



FAIRMONT JASPER PARK LODGE

Located in Jasper National Park, Jasper Park Lodge offers a quintessentially Canadian experience. Employees of the lodge take full advantage of the vast nature surrounding it and love the close-knit community Jasper is known for. This includes skiing, snowshoeing, ice skating and cross country skiing in the winters. In the summers time is spent hiking, camping, biking and paddling the pristine emerald lakes surrounding the lodge.



FAIRMONT CHATEAU WHISTLER

Known for its stunning vistas, incredible outdoor lifestyle and welcoming mountain community, Whistler offers endless adventure no matter what season you visit. Voted #1 Resort in Canada by Condé Nast Traveller, Reader's Choice Awards in 2021, Fairmont Chateau Whistler offers an incredible opportunity to gain valuable and credible work experience while enjoying all the exciting benefits that life in Whistler offers.

STAFF HOUSING

Double Occupancy Rooms: These open concept, dorm-style rooms feature a ¾ wall separating the bedroom area from the living room area. They may accommodate up to two people and include a private bathroom with a stand up shower plus a kitchenette with a fridge, stove, sink and cupboard space. Communal laundry facilities are available.

\$15.00/day
*Includes High-speed Internet

PERKS & BENEFITS

- Complimentary ski hill transportation
- One complimentary duty meal per day
- Free outdoor gear rentals for colleagues
- Destination Travel Program
- Subsidized fitness centre memberships
- Food & beverage outlet discount (30%)
- Employee discount on golf course membership
- Colleague lifestyle events

STAFF HOUSING

Double Occupancy Rooms: These four person units consist of two bedrooms that share a kitchen, one common room area with two sofas and a coffee table, and one bathroom. Each person will have a twin bed, dresser and closet. There are also loft-style units which host two people in the upper area and three people below.

\$9.50/day

PERKS & BENEFITS

- Complimentary ski hill transportation
- One complimentary duty meal per day
- Free outdoor gear rentals for colleagues
- Destination Travel Program
- Subsidized fitness centre memberships
- Food & beverage outlet discount (30%)
- Complimentary canoe vouchers for colleagues
- Colleague lifestyle events

STAFF HOUSING

Double/Triple Occupancy Rooms: Convenient, on site, double or triple occupancy rooms are available for colleagues. Bedrooms come equipped with a single bed including all necessary linens and are in close proximity to communal bathrooms and kitchens. Colleague facilities include; outdoor quad court, staff gym, wellness room and laundry facilities.

\$5.14 - \$7.32/day
*Based on occupancy

PERKS & BENEFITS

- Free shuttle service to Jasper and local attractions (including the ski hill)
- Staff Cafeteria - meals can be purchased for \$4.00
- Destination Travel Program
- Free outdoor gear rentals for colleagues
- Colleague Lifestyle Program
- Food & beverage outlet discount (25%)
- Employee discount on golf course membership
- Employee discount at Spa

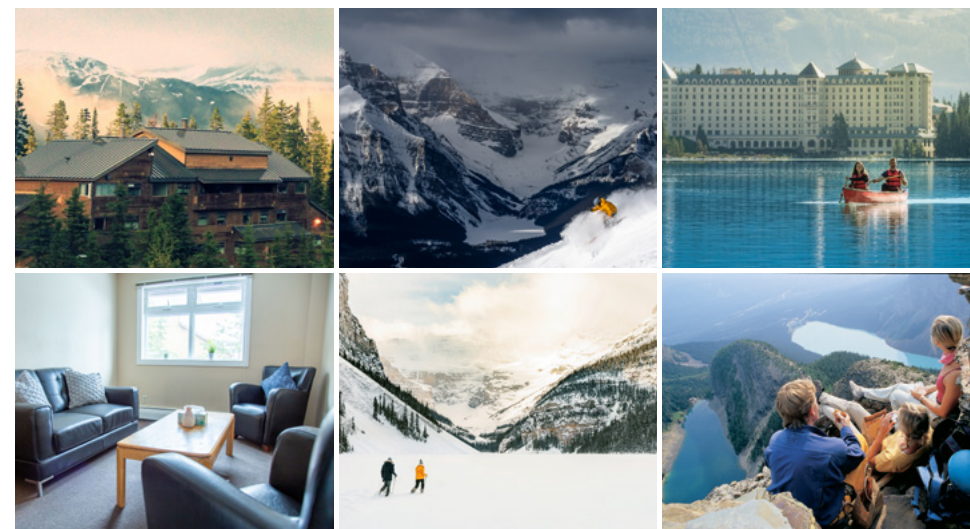
STAFF HOUSING

Quad Occupancy Rooms: We offer two-bedroom, ski-in, ski-out units which are dorm-style, with an open concept kitchen and living room area. They accommodate four people and include a private bathroom with tub/shower as well as a fully self-contained galley style kitchen with a fridge, stove, microwave and toaster oven.

\$12.75/day

PERKS & BENEFITS

- Ski-in, ski-out staff housing
- One complimentary duty meal per day
- Lifestyle benefit of up to \$800/employee/season
- Destination Travel Program
- Subsidized fitness centre memberships
- Food & beverage outlet discount (50%)
- Employee discount on golf course membership
- Colleague events hosted throughout the year



LEARN MORE
BANFFSPRINGSJOBS.COM



LEARN MORE
LAKELOUISEJOBS.COM



LEARN MORE
JASPERPARKLODGEJOBS.COM



LEARN MORE
WHISTLER-JOBS.CA

Not sure where to start? Take our quiz to find out [which property is right for you.](#)